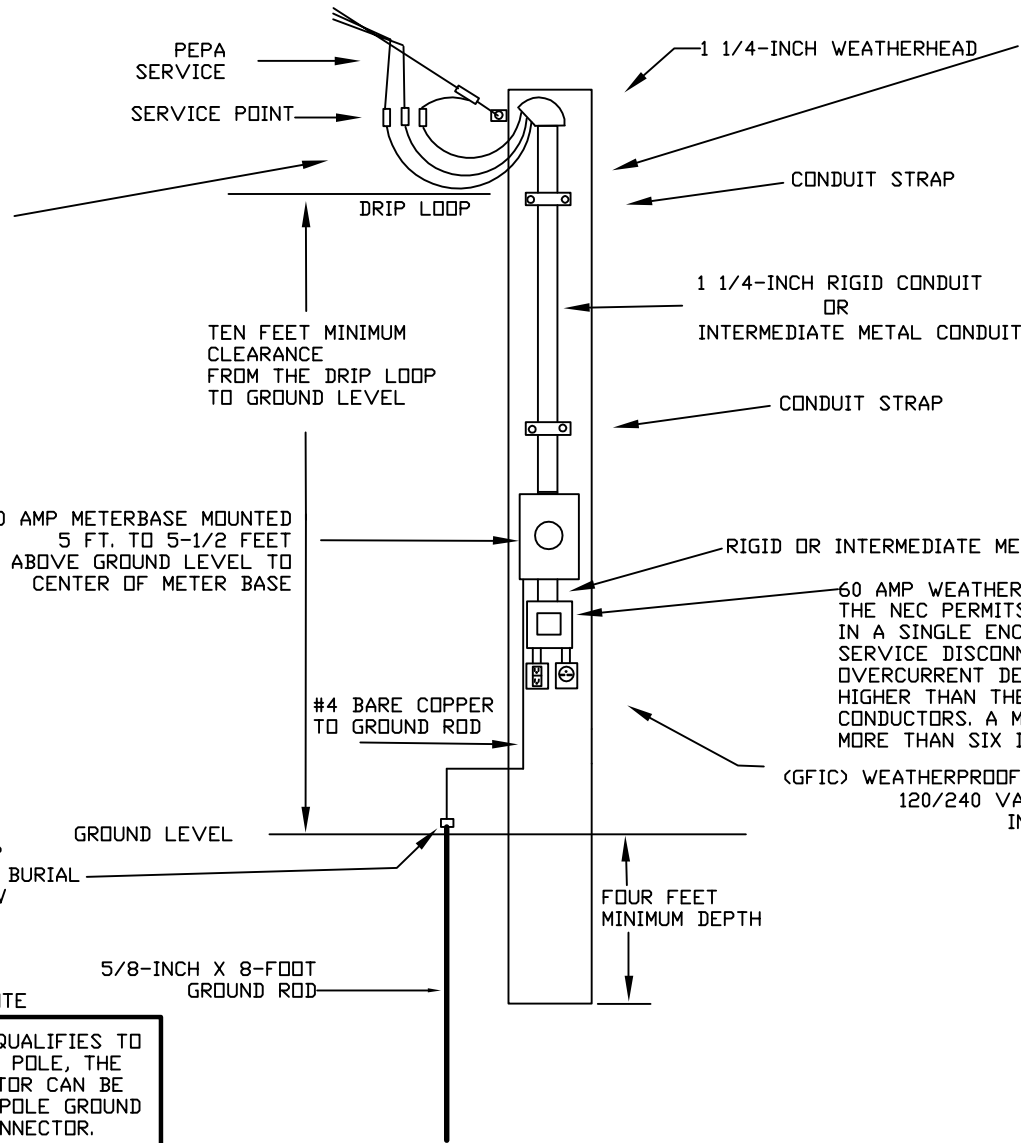


# 60 AMP TEMPORARY METER LOOP FOR CONSTRUCTION REQUIREMENTS

- MOUNTING SPECIFICATIONS**
- TEMPORARY METER LOOPS MAY BE MOUNTED ON A TREATED 2 X 6 AND ATTACHED TO PEPA POLE, PROVIDED THERE ARE NO TV/TELEPHONE CABLES ATTACHED TO PEPA'S POLE.
  - IF TV/TELEPHONE CABLES ARE PRESENT ON PEPA POLE, THEN A 20 FOOT TREATED, SIX INCH IN DIAMETER POLE, SET FOUR FEET DEEP IN THE GROUND AND ADEQUATELY BRACED WILL BE REQUIRED WITHIN 100 FEET OF THE UTILITY'S POLE AND WITH THE SERVICE DROP PASSING OVER UNOBSTRUCTED RIGHT-OF-WAY.
  - TEMPORARY METER LOOPS ARE FOR CONSTRUCTION PURPOSES ONLY AND ONLY USED DURING THE DURATION OF THE CONSTRUCTION.
  - IT IS THE CUSTOMER'S RESPONSIBILITY TO PROVIDE A SERVICE POLE OF ADEQUATE STRENGTH AND STABILITY TO WITHSTAND THE STRAIN IMPOSED BY THE UTILITY'S SERVICE DROP.

TWO-#6 BLACK HOT LEGS  
 ONE-#6 WHITE NEUTRAL  
 ALL CONDUCTORS MUST BE COPPER  
 DRIP LOOP MUST BE 18 INCHES OUTSIDE WEATHERHEAD  
 ALL WIRES MUST BE OF THE CORRECT COLORS, NOT TAPED OR PAINTED



BRONZE GROUND CLAMP SUITABLE FOR DIRECT BURIAL MUST BE AT OR BELOW GROUND LEVEL

**GROUNDING NOTE**  
 IF THE METER LOOP QUALIFIES TO BE MOUNTED ON PEPA POLE, THE #4 GROUNDING CONDUCTOR CAN BE CONNECTED TO PEPA POLE GROUND WITH THE PROPER CONNECTOR.

ALL SERVICES SHALL MEET OR EXCEED THE NEC AND NESC CODES

SEE BACK FOR OTHER INSTRUCTIONS

REVISED SEPTEMBER 2010  
 PONTOTOC ELECTRIC POWER ASSOCIATION  
 662-489-3211 PONTOTOC  
 662-983-2727 BRUCE  
 DRAWN BY R. MORGAN

IN ORDER TO INSURE THAT THE METER IS SET AT PROPER LOCATION, ALL DWELLINGS, APARTMENTS, MOBILE HOMES AND BUILDINGS MUST BE CLEARLY MARKED WITH THE CORRECT E-911 ADDRESS IN A PROMINENT LOCATION BEFORE A METER WILL BE SET.

APARTMENTS THAT ARE DESIGNATED BY APARTMENT NUMBER AND MOBILE HOME PARKS THAT ARE IDENTIFIED BY LOT NUMBER MUST ALSO BE CLEARLY MARKED. THE CORRECT APARTMENT NUMBER OR MOBILE HOME LOT NUMBER MUST BE SHOWN ON THE RENTAL RECEIPT.